

Perry County Industrial Park North

Property Report (Perry County Industrial Park North)



Property Details

Site/Building Name	Perry County Industrial Park North
Street Address	Highway 37 and Interstate 64
City	Tell City
County	Perry County
Zip Code	47586
Type of space	Industrial
Min Size	10 acres
Max Size	65 acres
Last Updated	6/27/2014

Contact Information

Company	Perry County Development Corporation
Contact Name	Alvin Evans
Title	Vice Chairman & CEO
Address	601 Main Street, Suite A
City	Tell City
State	Indiana
Phone	812-547-8377
Email	alvin@pickperry.com
Website	www.pickperry.com



Availability

For Sale	Yes
Sale Terms	Fair Market Value
Total Size	195 acres
Current Use	Agriculture

Site Details

Alta Date	7/13/09
Alta Survey	Yes
Contiguous Acres Available for Development	65 & 54
Featured Site Description	Shovel Ready
Flood Plain	No
Industrial Park Name	Perry County Industrial Park North
Percent in Flood Plain	0
Phase 1	Yes
Phase 1 Date	7/13/09
Phase 1 Environment Report	Yes
Shovel Ready	Yes
Total Acres	195 acres
Zoning	Business/Residential/Conservation
Zoning Authority	Perry County Planning & Zoning

Transportation

Interstate Name	Interstate 64
Distance to Interstate	1 miles
Highway Description	SR 37 - Limited Access Super Two Highway
Nearby Highway	SR 37
Distance to Nearest Highway	Adjacent miles
Nearest International Airport	Louisville International Airport
Distance to Nearest Airport	55 miles
Regional Airport Name	Perry County Municipal Airport
Distance to Regional Airport	17.3 miles
Regional Airport Runway Length	4400 ft
Distance to Rail	24 miles
Rail Provider	Hoosier Southern Railroad
Distance to Port	24 miles

Utilities

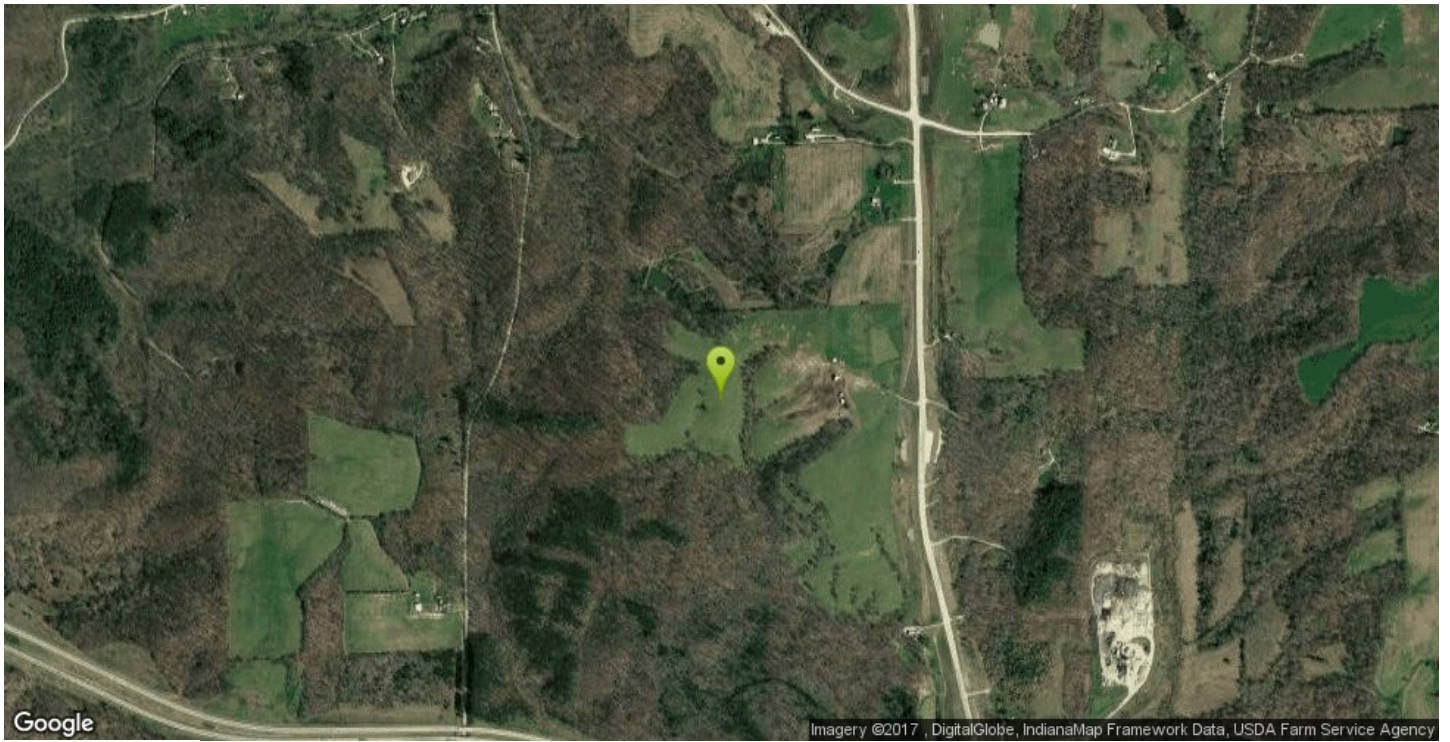
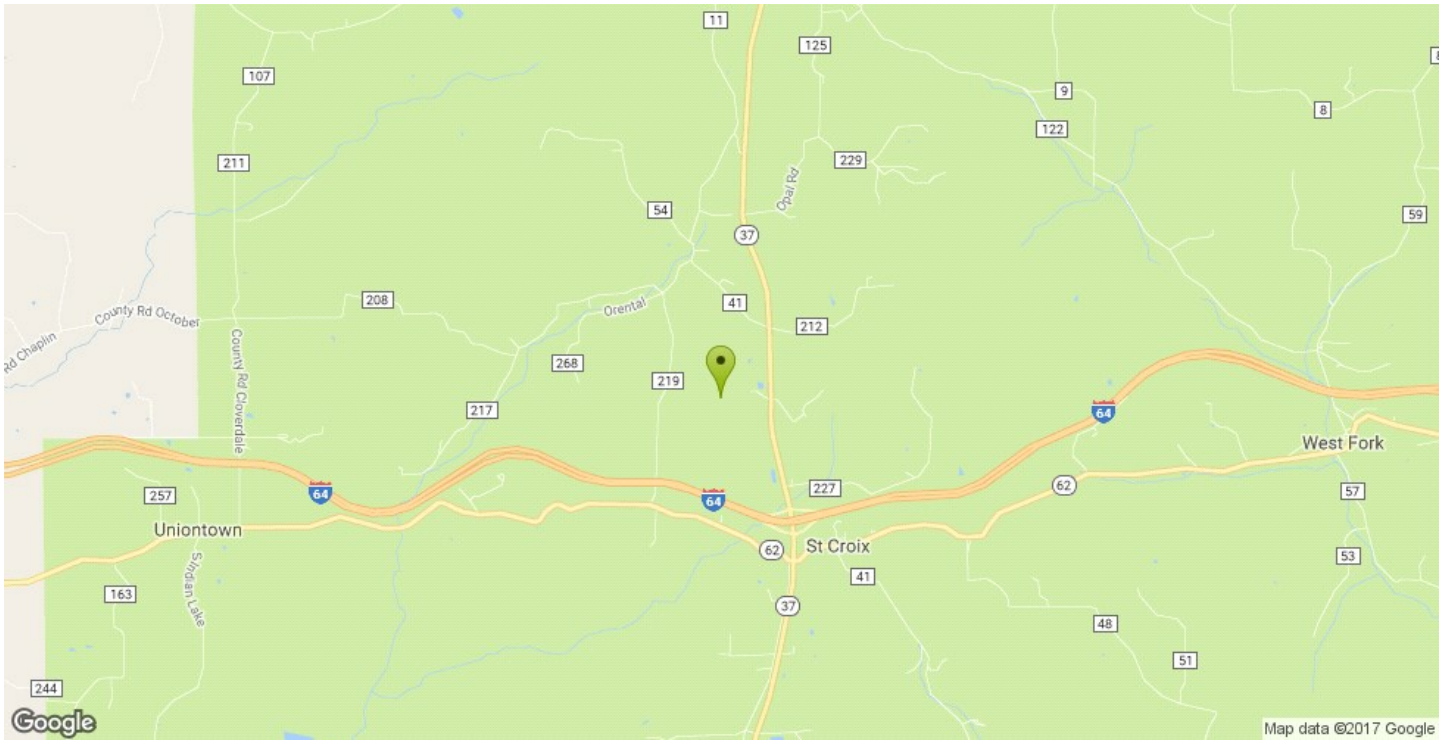
Electric	Yes
Distance to Sub Station	5 miles
Substation Size	69,000 / 12,470 Volt
Electric Provider	Southern Indiana Power / Hoosier Energy
Power Phases	Three Phase (Hwy. 37) & Single (Omaha)
Water	Yes
Water Provider	Patoka Lake Regional Water & Sewer District
Water Line	10 inches
Water Main Pressure	129 lbs. (Hwy. 37) & 99 lbs. (Omaha)
Telecom	Yes

Telecom Provider	Perry Spencer Communications
Internet Connection	Yes
ISP	Perry Spencer Communications

Other	
Responsible Party	Perry County Development Corporation
Ownership	Private
Property Tax	\$1.8074 per \$100 Assessed Value
Tax Year	2014

Description
<p>Perry County Industrial Park North consists of two separate sites: Perry County Highway 37 North and Perry County Omaha Road North. A Phase I study was completed on both sites in 2009 and the county is in attainment for air emissions. Perry County Highway 37 North fronts Indiana State Road 37, a limited-access "Super Two" highway, just one mile north of Interstate 64. This site consists of 104 acres, of which 65 are ready for development and the remaining acreage providing the natural insulation of farm land and forest land for the site. It is served by utilities including water, digital connectivity and three-phase electric provided by Southern Indiana Power / Hoosier Energy. Perry County Omaha Road North sits just two miles from Interstate 64 via State Highway 62 and State Highway 37, a limited-access "Super Two" highway. This site consists of 95 acres, of which 54 are ready for development. The remaining acreage provides the natural insulation of farm land and forest land for the site. Perry County Omaha Road North is served by utilities including water, digital connectivity and electricity provided by Southern Indiana Power / Hoosier Energy. A three-phase electric line is located ½ mile from the site.</p>

Highway 37 and Interstate 64



Highway 37 and Interstate 64

