

Osgood Business Park

Property Report (Osgood Business Park)



Property Details

Site/Building Name	Osgood Business Park
Street Address	1050 Railroad Avenue
City	Osgood
County	Ripley County
Zip Code	47037
Type of space	Business Park
Min Size	5 acres
Max Size	67 acres
Last Updated	1/15/2014

Contact Information

Company	Ripley County Economic Development Corporation
Contact Name	Gary Norman
Address	220 E. US 50, PO Box 576
City	Versailles
State	Indiana
Phone	812-689-4344
Email	gnorman@ripleycountyedc.com
Website	http://www.ripleycountyedc.com



Availability

Lease Type	private
For Sale	Yes

Building Details

Divisible	Yes
Building Environment	Downtown - Commercial
Building Type	Distribution

Site Details

Featured Site Description	Shovel Ready
Phase 1	Yes
Shovel Ready	Yes
Zoning	Industrial

Transportation

Interstate Name	I-74
Distance to Interstate	18 miles
Nearby Highway	Hwy 421
Distance to Nearest Highway	1 miles
Nearest International Airport	Cincinnati International
Distance to Nearest Airport	35 miles
Rail Served	Yes

Utilities

Electric	Yes
Electric Provider	Duke Energy
Natural Gas	Yes
Natural Gas Provider	Town of Osgood
Sewer	Yes
Sewer Provider	Town of Osgood
Water	Yes
Water Provider	Town of Osgood
Telecom Provider	Verizon
Internet Connection	Yes

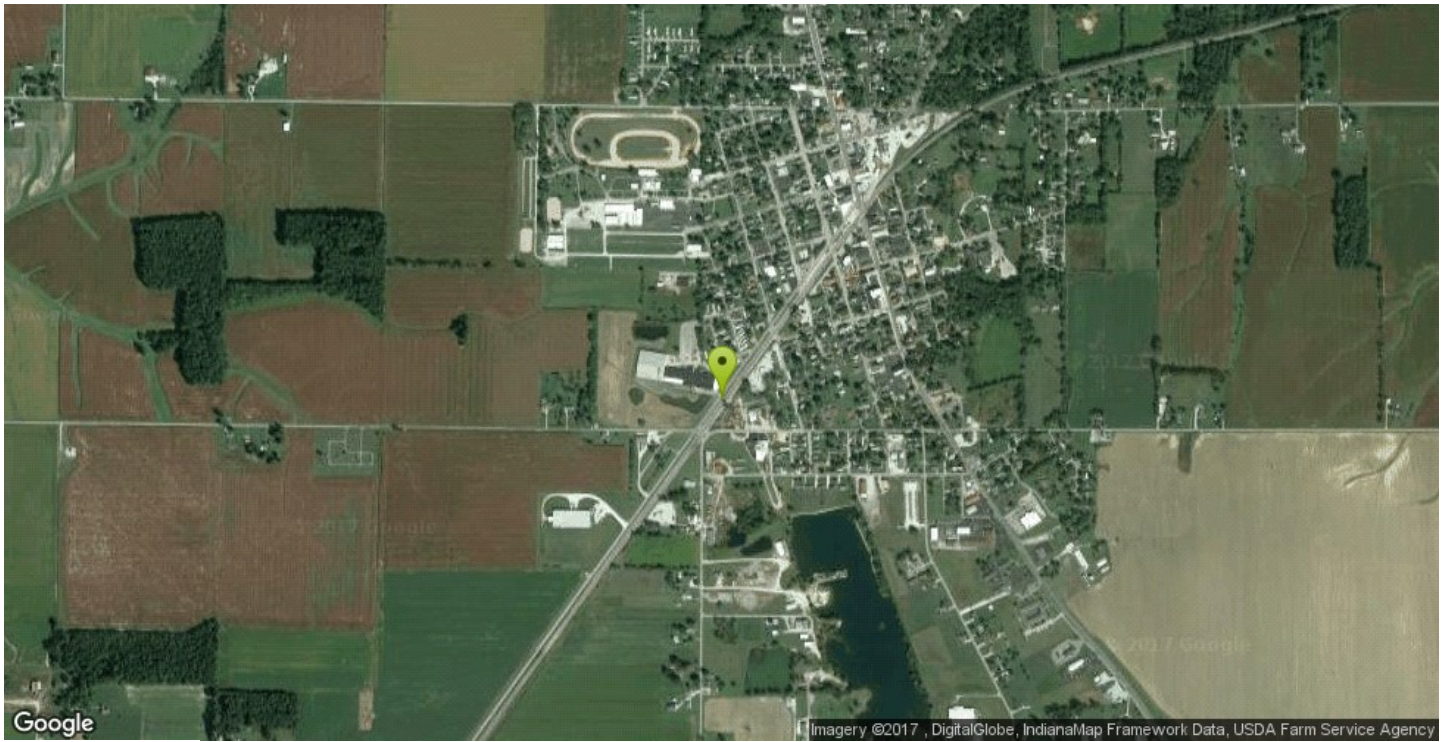
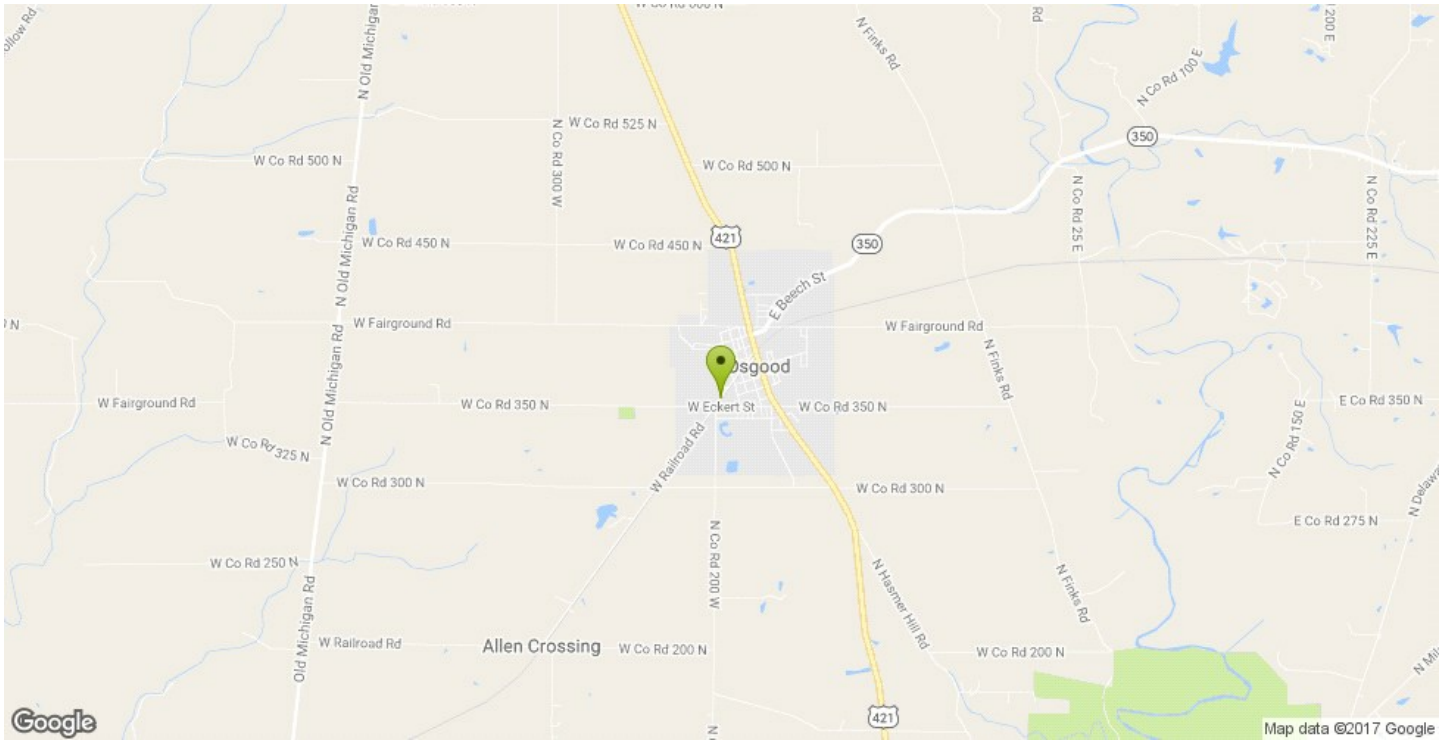
Description

SHOVEL READY

Attachments

[Osgood business park-pdf.pdf](#)

1050 Railroad Avenue



1050 Railroad Avenue

