

Harrison County Industrial Park

Property Report (Harrison County Industrial Park)



Property Details

Site/Building Name	Harrison County Industrial Park
Street Address	725 Quarry Rd.
City	Corydon
County	Harrison County
Zip Code	47112
Type of space	Industrial
Min Size	5 acres
Max Size	14 acres
Last Updated	7/5/2016

Contact Information

Company	Harrison County Economic Development
Contact Name	Darrell Voelker
Address	111 W. Walnut Street
City	Corydon
State	Indiana
Phone	812-738-0120
Cell	812-705-0203
Fax	812-738-0500
Email	dvoelker@harrisonchamber.org
Website	http://www.hcedcindiana.org

Harrison County

Availability

For Lease	Yes
Lease Type	private
For Sale	Yes
Sale Price	\$34,000.00
Current Use	Business Park

Building Details

Divisible	Yes
Building Environment	Stand Alone Industrial Site
Building Type	Light Industrial

Site Details

Featured Site Description	Shovel Ready
Flood Plain Map Number	180086 0005 B
Parcel	004-01411-00
Phase 1	Yes
Phase 1 Date	7172012
Phase 1 Environment Report	Yes
Shovel Ready	Yes
Soil Report	Yes
Zoning	Light Industrial
Zoning Authority	Town of Corydon

Transportation

Interstate Name	I-64
Distance to Interstate	1 miles
Nearby Highway	SR 135
Distance to Nearest Highway	1 miles
Nearest International Airport	Louisville International
Distance to Nearest Airport	35 miles
Regional Airport Name	Clark County Airport
Distance to Regional Airport	35 miles
Regional Airport Runway Length	5500 ft
Distance to Rail	1
Rail Provider	Lucas Oil Rail Lines
Distance to Port	35 miles

Utilities

Electric	Yes
Distance to Sub Station	2500
Substation Size	22400
Electric Provider	Harrison R.E.M.C.
KVA	69000
Typical KVA	69000
Power Phases	Three
Dual Feed	Yes
Natural Gas	Yes
Natural Gas Line Size	4

Natural Gas Pressure	60
Sewer	Yes
Sewer Provider	Town of Corydon
Sewer Line	8
Waste Water Capacity	600000
Water	Yes
Water Provider	Town of Corydon
Water Line	8
Water Main Pressure	60
Telecom	Yes
Telecom Provider	Verizon
Internet Connection	Yes
Internet Service Type	Wireless, Fiber, T-1,DS 3
Maximum Bandwidth	90000

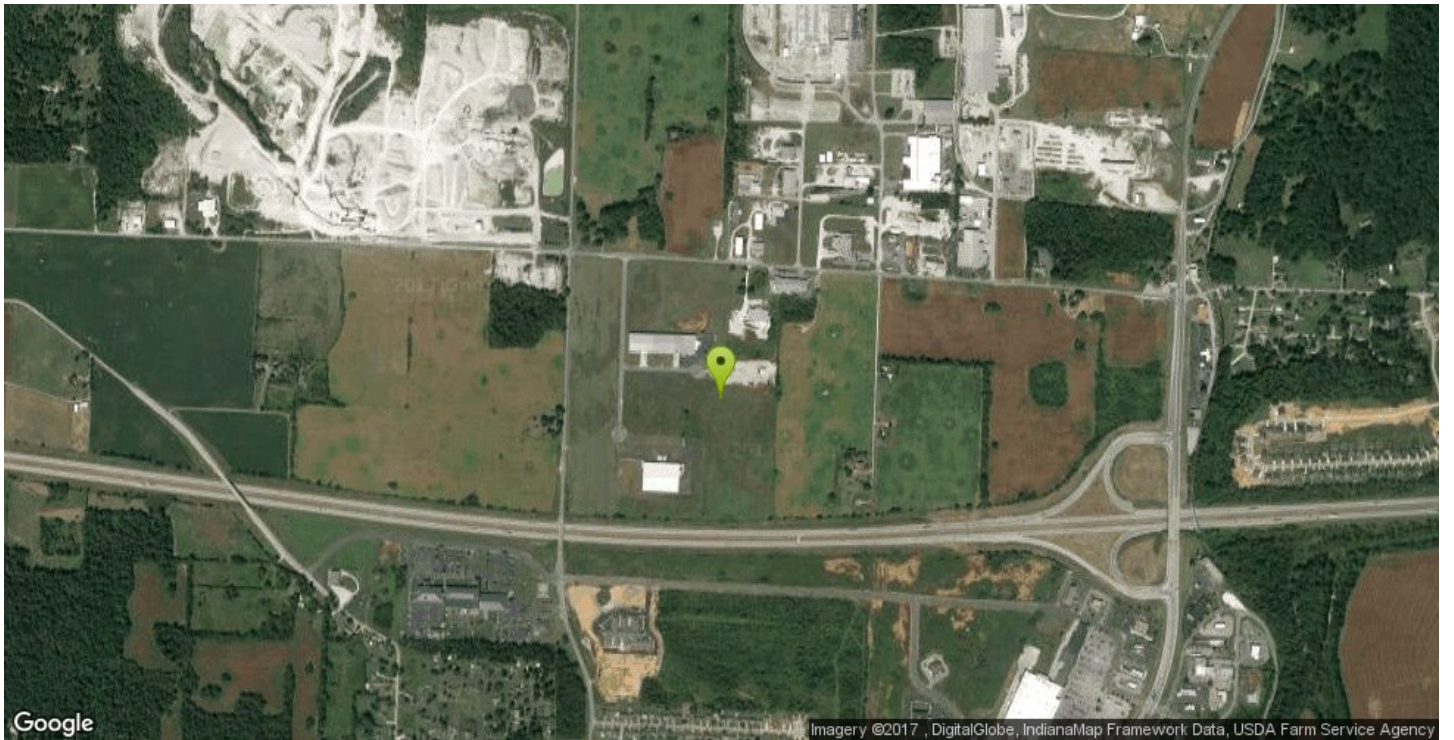
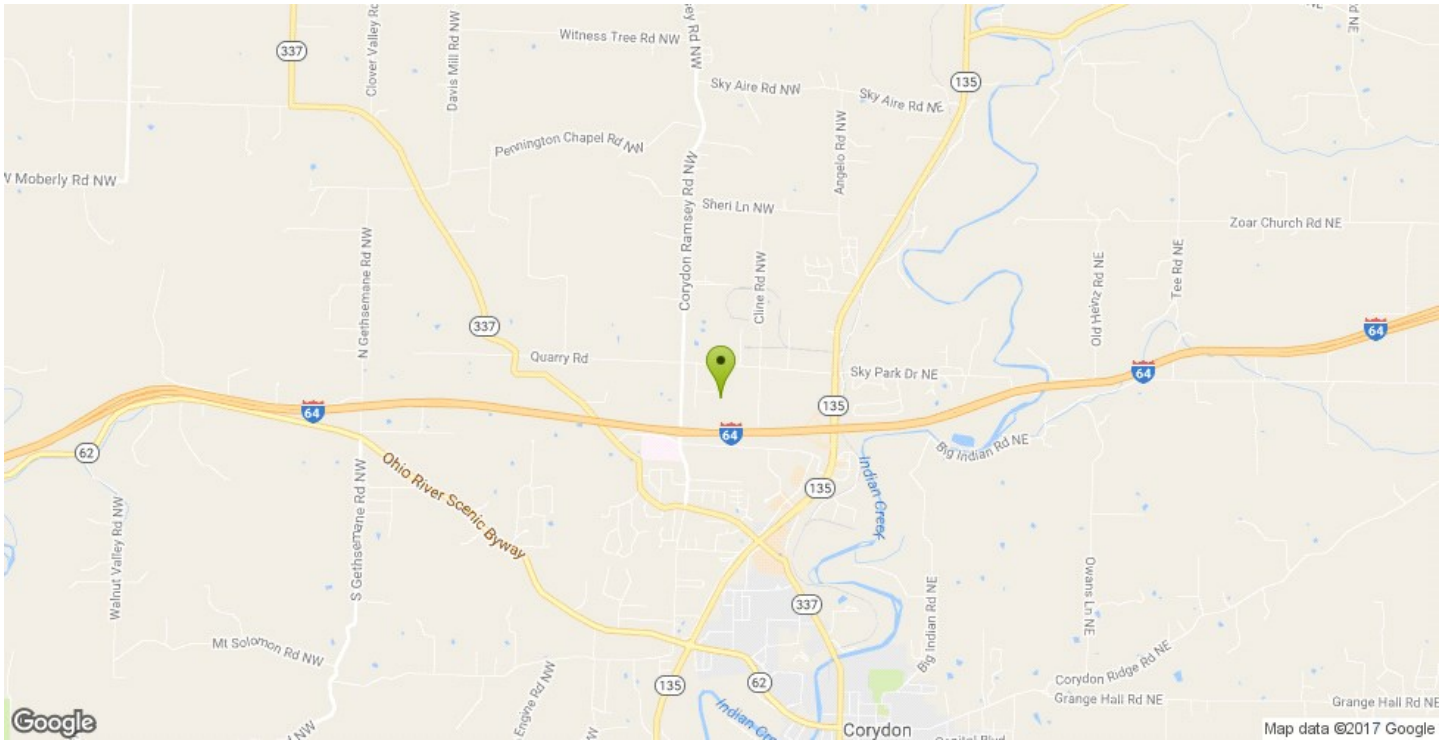
Other	
Land Value	121300
Tax District Name	Harrison
Property Tax	1419
Tax Year	2013
Assessed Value	121300

Incentives	
Economic Revitalization Area	Yes

Contacts	
Alternate Contact Name	Darrell Voelker
Alternate Contact Company	Harrison County EDC
Alternate Contact Phone	812.738.0120
Alternate Contact Address	111 W. Walnut St.
Alternate Contact City	Corydon
Alternate Contact Zip	47112
Alternate Email Address	dvoelker@hcedcindiana.org

Attachments	
Industrial Park Plat map.pdf	

725 Quarry Rd.



725 Quarry Rd.

