

# Adams Rail Park

Property Report (Adams Rail Park)



## Property Details

Site/Building Name	Adams Rail Park
Street Address	4204 W. County Road 300N
City	Greensburg
County	Decatur County
Zip Code	47240
Type of space	Industrial
Min Size	15 acres
Max Size	73 acres
Last Updated	2/21/2012

## Contact Information

Company	Economic Development Corporation of Greensburg/Decatur County
Contact Name	Natasha Kellerman
Address	314 W Washington St
City	Greensburg
State	Indiana
Phone	812-222-2520
Fax	812-222-2506
Email	<a href="mailto:nkellerman@edcgdc.com">nkellerman@edcgdc.com</a>
Website	<a href="http://www.edcgdc.com">www.edcgdc.com</a>



## Availability

Lease Type	private
For Sale	Yes
Sale Price	\$3,796,000.00
Current Use	vacant farm land

## Site Details

Featured Site Description	Shovel Ready
Parcel	11-09-30-0011-09-29-00
Phase 1	Yes
Phase 1 Date	142007
Shovel Ready	Yes
Zoning	15.19 acres zoned B-3 and priced at \$75,000/acre. The remaining 58.64 acres is zoned I-1 and is priced at \$35,000/acre.
Zoning Authority	Decatur County Area Plan Commission

## Transportation

Interstate Name	I-74
Distance to Interstate	2 miles
Nearby Highway	US 421
Distance to Nearest Highway	2 miles
Nearest International Airport	Indianapolis International
Distance to Nearest Airport	57 miles
Regional Airport Name	Greensburg Decatur County Airport
Distance to Regional Airport	4 miles
Regional Airport Runway Length	3,500 x 40 wide ft
Rail Served	Yes
Rail Provider	Central Railroad Company of Indiana
Distance to Port	80 miles

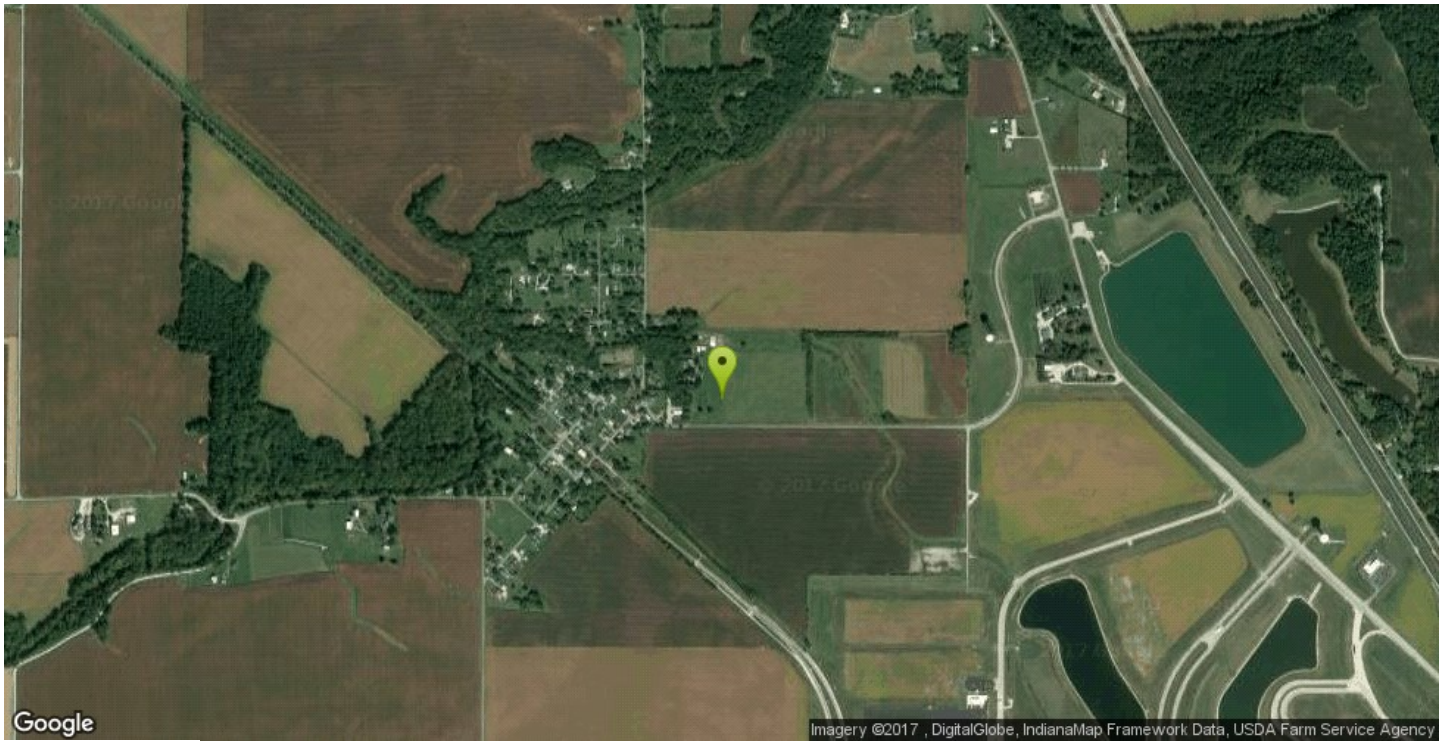
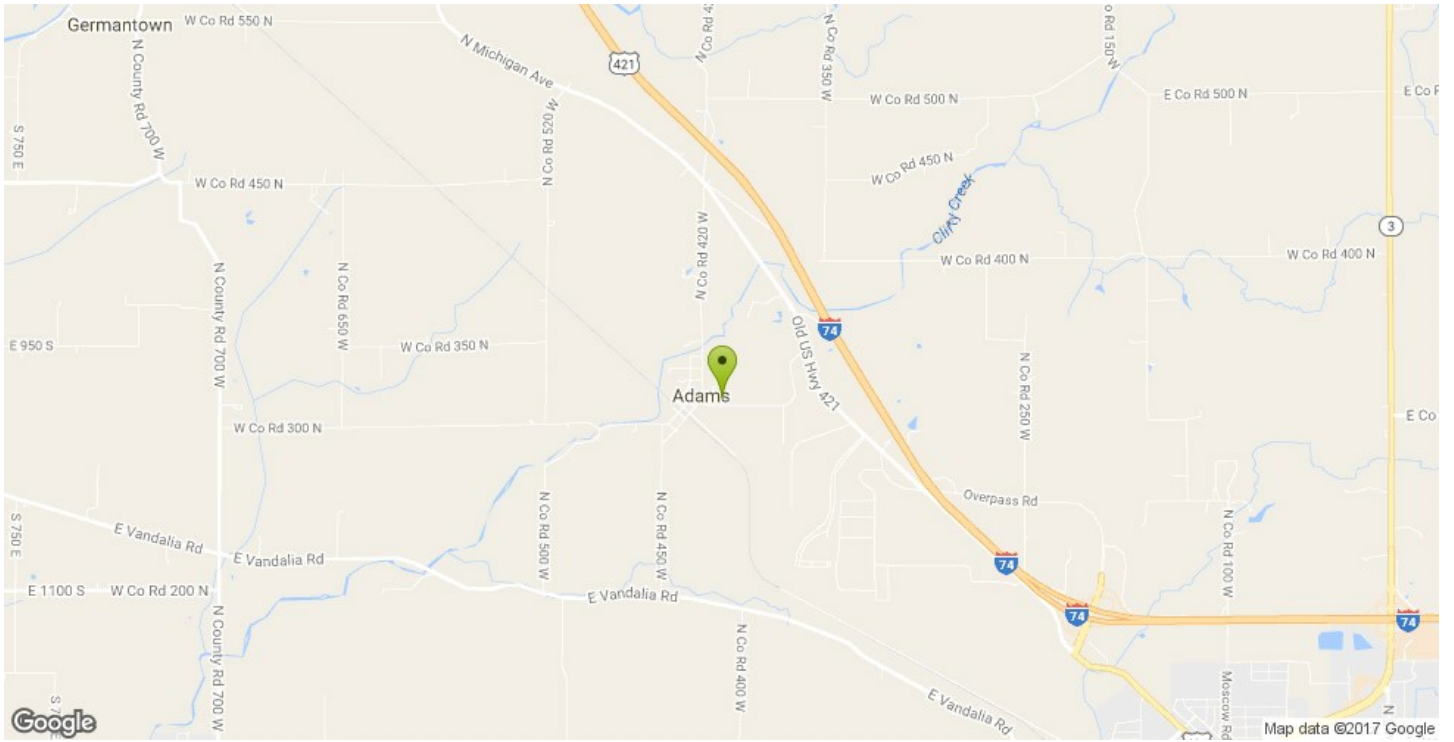
## Utilities

Distance to Sub Station	23760
Electric Provider	Decatur County REMC
Power Phases	3 phase, single phase
Dual Feed	Yes
Natural Gas Provider	Vectren
Sewer Provider	Greensburg Municipal Wastewater
Sewer Line	24
Waste Water Capacity	800000
Water Provider	Decatur County Rural Water
Water Line	8
Telecom Provider	ETC
ISP	ETC
Internet Service Type	IFN

## Description

15.19 acres zoned B-3 and priced at \$75,000/acre. The remaining 58.64 acres is zoned I-1 and is priced at \$35,000/acre.

4204 W. County Road 300N



4204 W. County Road 300N

